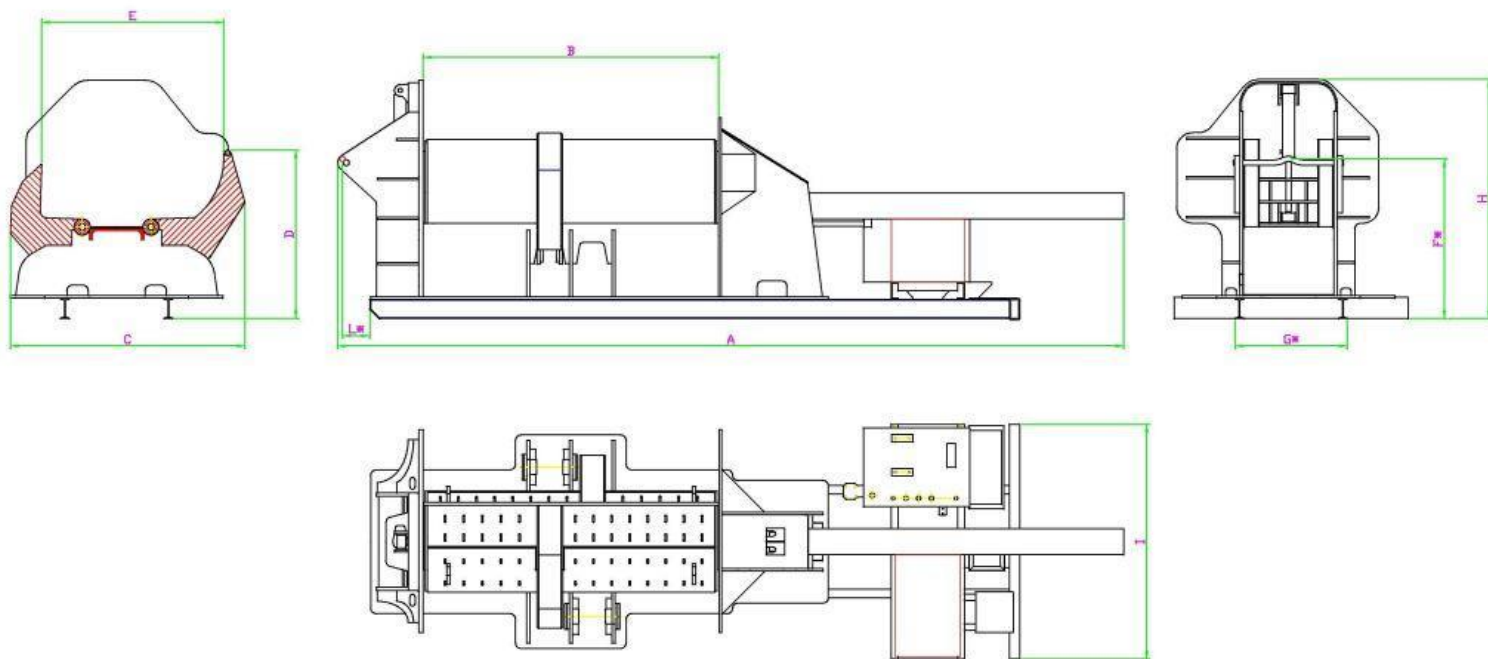


MANTA mod. 54

BALER FOR METAL WASTES AND LIGHT IRON SCRAPS TREATMENT



BALER – STANDARD CONFIGURATION

BALER MANTA mod. 54 DIMENSION	
TOTAL LENGTH (A)	7400 mm
COMPRESSION BOX LENGTH (B)	2775 mm
WIDTH (C)	2200 mm
CHARGING HEIGHT (D)	1580 mm
COMPRESSION BOX WIDTH (with wings open) (E)	1700 mm
HOOK HEIGHT (F)*	1500 mm
BEAM WIDTH (G)*	1055 mm
BALER HEIGHT (H)	2250 mm
BALER WIDTH DURING TRANSPORT PHASE (I)	2400 mm
DISTANCE BETWEEN HOOK AND BEAM (L)*	255 mm
BALER (standard configuration) WEIGHT	14000 kg

(*) Standard configuration with roll-on – roll-off

BALER MANTA mod.54 TECHNICAL SPECIFICATIONS	
➤ PRE-COMPRESSION BOX	
- Oscillating wings with internal crossing cylinders (wings and base are made in anti-wear steel Hardox – structural)	Yes
- Box length	2775 mm
- Opened box width	1700 mm
- Bale's dimensions	500x400 mm
- Cylinders on each wing	1
- Max. compression force on each wing	65 t
- Expulsion door	Yes
- Pre-compression box lubrication	Manual
➤ FEEDING	
- Longitudinal compression cylinder (max compression force)	95 t
➤ HYDRAULIC UNIT	
- Constant power piston pump (variable output)	K3V80L
- Piloting pump	5 l/min
- Hydraulic oil tank	400 l
- Distributor	Yes
- Oil filtering circuit on the return	Yes
- Oil filtering system on piloting pump	Yes
- Air/oil cooling	Yes
- Max pressure	300 bar
➤ POWER UNIT	
- Electric version <ul style="list-style-type: none"> • Main electric motor • Electric board panel 	55 Kw (73.7hp) Yes
- Diesel version <ul style="list-style-type: none"> • Iveco diesel engine 	61kW (83hp)
➤ ELECTRONIC UNIT	
- PLC + radio remote control + electric board panel + push-button panel	
➤ OPTIONAL ON DEMAND	
- Warning acoustic signal system (siren)	
- Sound proofing for diesel engine	
- Cold climate package	
- Roll-on / Roll-off (** Please specify if you want it different from our standard version)	

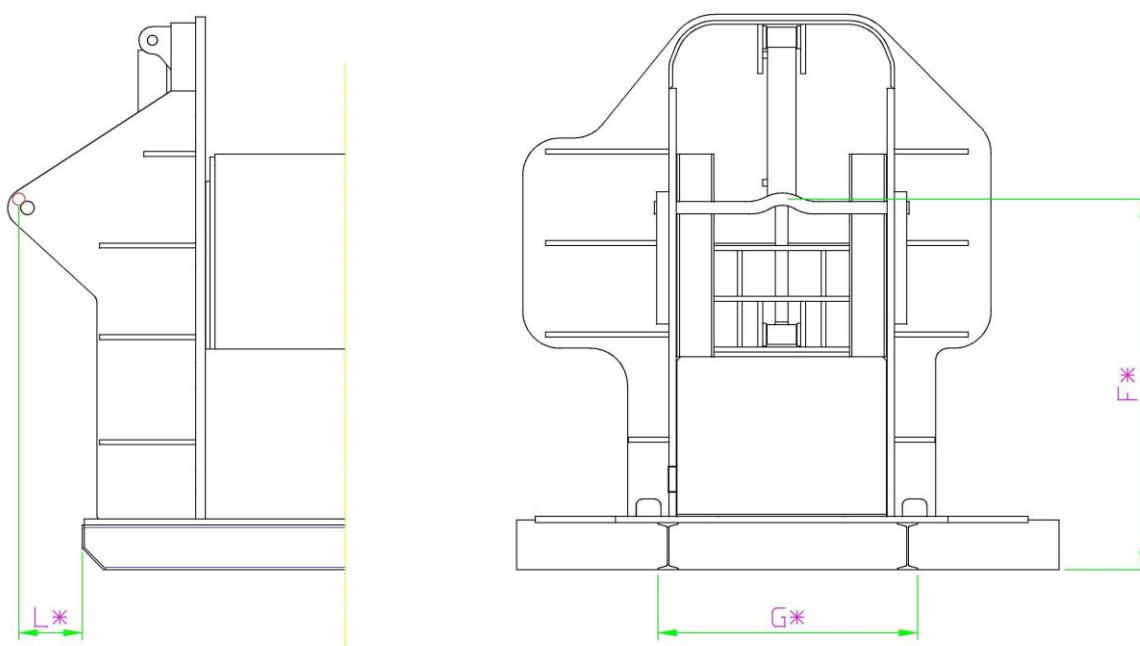
➤ **PRODUCTION**

- Up to 30 bales/hour

Please note that: the stated production rates are indicative and could change according to:

- the size and type of the material,
- the capacity of loading
- as well as the ability of the operator.

****INDICATE HERE HOW YOU WANT YOUR ROLL-ON – ROLL-OFF TO BE**



****ROLL-ON / ROLL-OFF DIMENSION**

HOOK HEIGHT (F)	mm
BEAM WIDTH (G)*	mm
DISTANCE BETWEEN HOOK AND BEAM (L)*	mm

