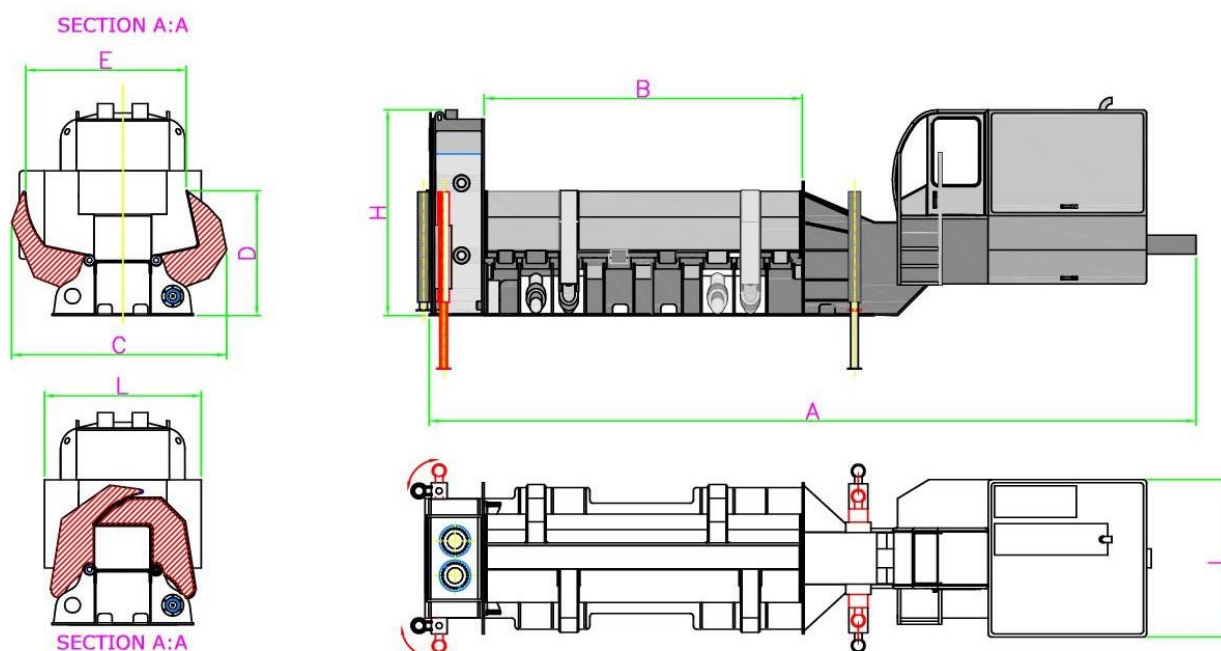


KATANA

mod.268(MOBILE)

SHEAR BALER FOR IRON SCRAP TREATMENT



SHEAR BALER KATANA mod.268 DIMENSION

TOTAL LENGTH (A)	~17000 mm
COMPRESSION BOX LENGTH (B)	6200 mm
WIDTH (C)	3045 mm
CHARGING HEIGHT (D)	2420 mm
COMPRESSION BOX WIDTH (with wings open) (E)	2300 mm
SHEAR BALER HEIGHT	3400 mm
SHEAR BALER (standard configuration) WEIGHT	59000 kg

SHEAR BALER KATANA mod.268 TECHNICAL SPECIFICATIONS	
> SHEAR	
- Shear cylinder (cutting force)	800 t
- Cutting width	850 mm
- Cutting height	620 mm
- Vertical hold down	Yes
- Hold down cylinder (compression force)	60 t (at 350bar)
- n° of complete cycles with material	4 c/1'
- Shear head greasing system	Automatic
> PRE-COMPRESSION BOX AND SHEAR FEEDING	
- Oscillating wings with internal crossing cylinders (wings and base are made in anti-wear steel Hardox – structural)	Yes
- Box length	6200 mm
- Opened box width	2300 mm
- Bale's dimensions	800x600 mm
- Cylinders on each wing	2
- Max. compression force on each wing	250 t
- Pre-compression box lubrication	Manual
> FEEDING	
- Longitudinal compression cylinder (max compression force)	150 t
> HYDRAULIC UNIT	
- Constant power piston pump (variable output)	(x2) K3V (200÷280 l)
- Pump for oil cooling and filtering	150 l/min
- Piloting pump	6 l/min
- Fan drive pump	30 l/min
- Hydraulic oil tank	2500 l
- Manifold block (logic system)	Yes
- Security valve	Internal
- Valve for shear cylinder fast oil discharge	Internal
- Valve for feeding cylinder fast oil discharge	Internal
- Oil filtering system after the pump	Yes
- Oil filtering circuit on the return	Yes
- Oil filtering system on piloting pump	Yes
- Air/oil cooling	Yes
- Max pressure	350 bar
> POWER UNIT	
. Electric motors	(2) x 90 kW

➤ ELECTRONIC UNIT	
- PLC	
- Radio remote control	
- Push-button panel	
- Laser sensor controlled feed ram	
➤ OPTIONAL ON DEMAND	
- Operator Cab.	
- Cold climate package with programmed starting of the oil heating system	
- Laser sensor controlled feed ram	
- Sound proofing for diesel engine	
➤ CUTTING CAPACITY	
- Square bar	100 mm
- Round bar	Ø110 mm
- Flat plate	700x50 mm
➤ PRODUCTION	
- Light material (cut 50 cm) 8 ÷ 10 M.tons/h	
- Heavy material (cut 50 cm) 10 ÷ 12 M.tons/h	

Please note that: the stated production rates are indicative and could change according to:

- the size and type of the material,
- the condition of the blades,
- the capacity of loading,
- the length of the cut,
- as well as the ability of the operator.